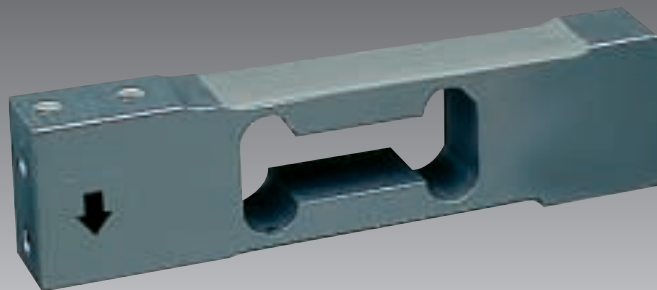




sartorius

MP 51

Single Point Load Cell



3 kg... 100 kg Typ N/C3/C3MR

- Aluminium alloy construction
- Compatible with other sources
- Low profile type
- Single point 400 x 400 platform

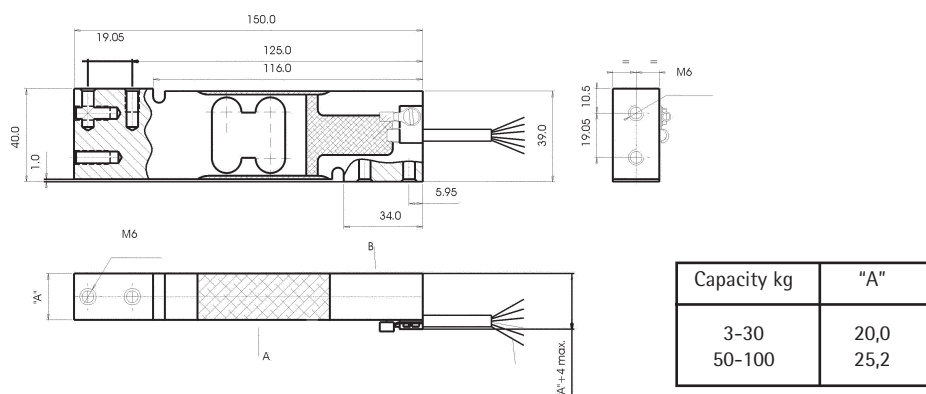
Applications

- Bench scales
- Counting scales
- Checkweigher

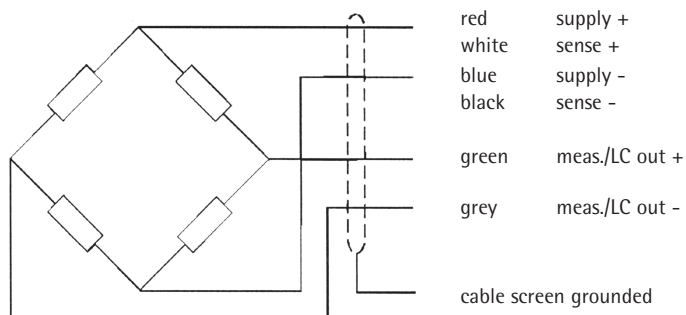
Technical Data		N	C3	C3MR	
Accuracy class		0.03	0.02	0.02	% E_{max}
Maximum capacity	E_{max}	s. table	s. table	s. table	
Max. usable load	E_u	150	150	150	% E_{max}
Destructive load	E_d	> 300	> 300	> 300	% E_{max}
Minimum LC verification interval $v_{min} = E_{max}/Y$	Y	-	6,000	12,000	
Rated output	C_n	2	2	2	mV/V
Tolerance on rated output	d_c	10	10	10	% C_n
Zero output signal	S_{min}	10	10	10	% C_n
Creep, during 30 min.	d_{cr}	< 0.025	< 0.0167	< 0.0139	% C_n
Temperature effect on S_{min}	$TK_{S_{min}}$	< 0.06	< 0.023	< 0.0116	% $C_n/10K$
Temperature effect on C	TK_c	< 0.014	< 0.01	< 0.01	% $C_n/10K$
Input impedance	R_{iC}	415 ± 15	415 ± 15	415 ± 15	Ω
Output impedance	R_o	350 ± 3	350 ± 3	350 ± 3	Ω
Insulation impedance	R_{iS}	> 2,000	> 2,000	> 2,000	M Ω
Recommended supply voltage	B_u	10	10	10	V
Max. supply voltage	U_{max}	15	15	15	V
Nominal ambient temp. range	B_T	-10 to +40	-10 to +40	-10 to +40	° C

Technical Data		N	C3	C3MR	
Usable ambient temp. range	B_{TU}	-30 to +70	-30 to +70	-30 to +70	° C
Nominal deflection	S_{nom}	≤ 0.5	≤ 0.5	≤ 0.5	mm
Cable length		1.5	1.5	1.5	m
Environmental protection		IP 66	IP 66	IP 66	

The technical data given here serve only as a product description and must not be interpreted as guaranteed characteristics in the legal sense.



Dimensions all in mm



Order information

Type	Order numbers	Type	Order numbers	Type	Order numbers	Max. capacity (2 mV/V)
MP 51/3 kg N	9408 251 01003	MP 51/3 kg C3	9408 251 03003	MP 51/3 kg C3MR	9408 251 07003	3 kg
MP 51/5 kg N	9408 251 01005	MP 51/5 kg C3	9408 251 03005	MP 51/5 kg C3MR	9408 251 07005	5 kg
MP 51/7 kg N	9408 251 01007	MP 51/7 kg C3	9408 251 03007	MP 51/7 kg C3MR	9408 251 07007	7 kg
MP 51/10 kg N	9408 251 01010	MP 51/10 kg C3	9408 251 03010	MP 51/10 kg C3MR	9408 251 07010	10 kg
MP 51/15 kg N	9408 251 01015	MP 51/15 kg C3	9408 251 03015	MP 51/15 kg C3MR	9408 251 07015	15 kg
MP 51/20 kg N	9408 251 01020	MP 51/20 kg C3	9408 251 03020	MP 51/20 kg C3MR	9408 251 07020	20 kg
MP 51/30 kg N	9408 251 01030	MP 51/30 kg C3	9408 251 03030	MP 51/30 kg C3MR	9408 251 07030	30 kg
MP 51/50 kg N	9408 251 01050	MP 51/50 kg C3	9408 251 03050	MP 51/50 kg C3MR	9408 251 07050	50 kg
MP 51/75 kg N	9408 251 01075	MP 51/75 kg C3	9408 251 03075	MP 51/75 kg C3MR	9408 251 07075	75 kg
MP 51/100 kg N	9408 251 01110	MP 51/100 kg C3	9408 251 03110	MP 51/100 kg C3MR	9408 251 07110	100 kg